



## Goodwood Close

Stanmore

£550,000

A ground floor, two bedroom flat available in excellent condition with Davidson Frost-Wellings.

The flat has an extremely large (nearly 30') reception room with double aspect and sliding doors leading to a private patio, then onto communal gardens. There is also a separate modern kitchen with integrated appliances, master bedroom with built-in wardrobes and ensuite shower room, plus a second double bedroom and a family shower room.

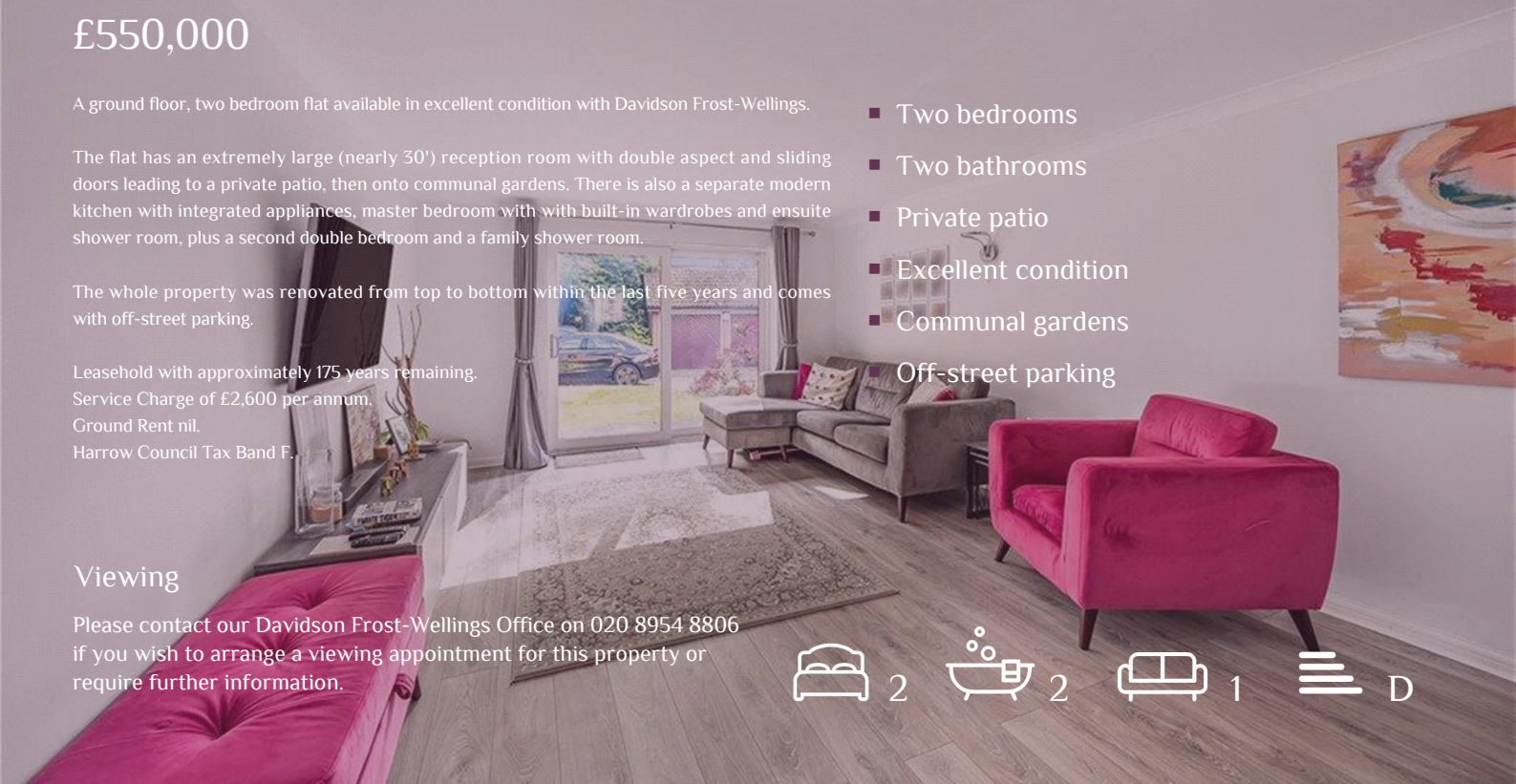
The whole property was renovated from top to bottom within the last five years and comes with off-street parking.

Leasehold with approximately 175 years remaining.  
 Service Charge of £2,600 per annum.  
 Ground Rent nil.  
 Harrow Council Tax Band F.

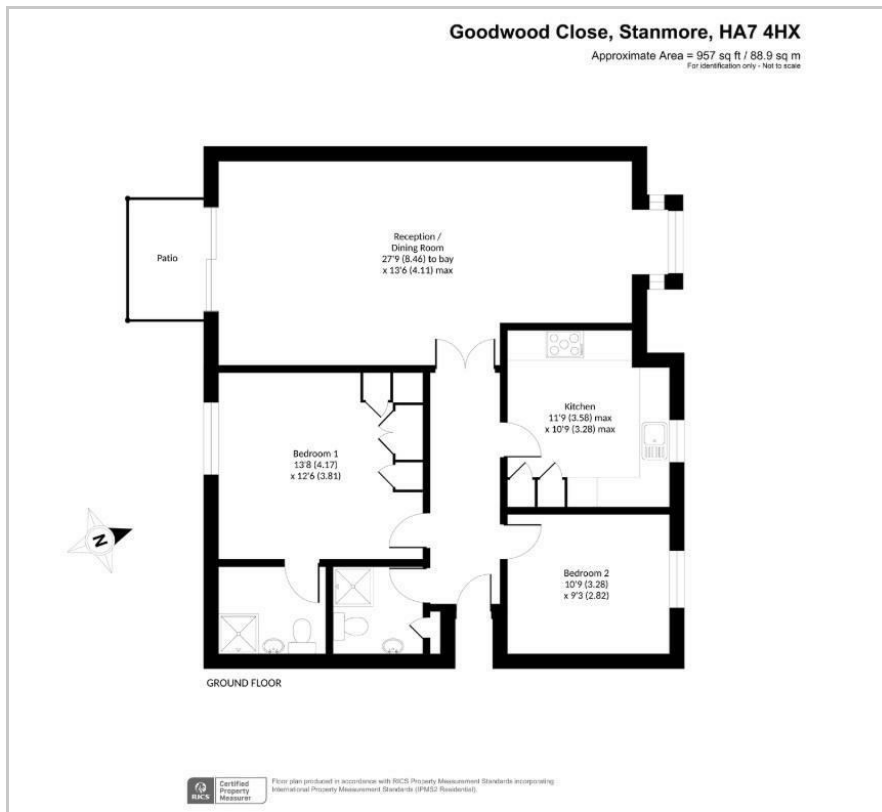
- Two bedrooms
  - Two bathrooms
  - Private patio
  - Excellent condition
  - Communal gardens
- Off-street parking

### Viewing

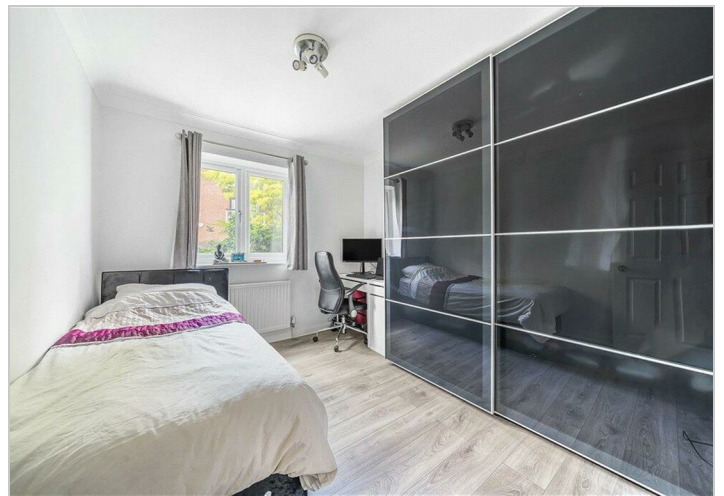
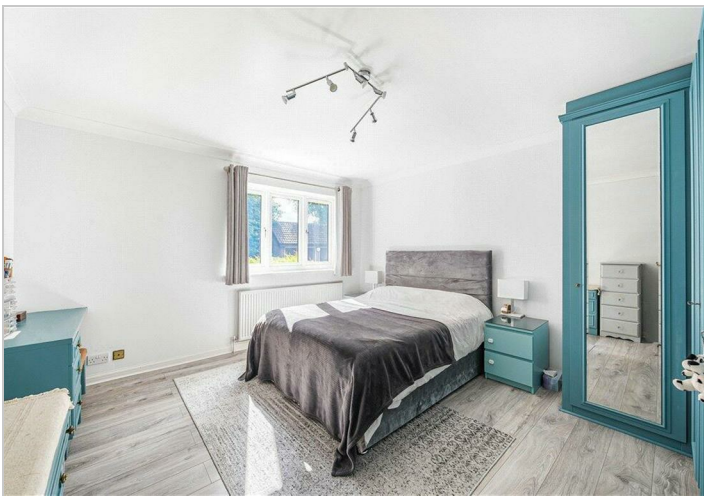
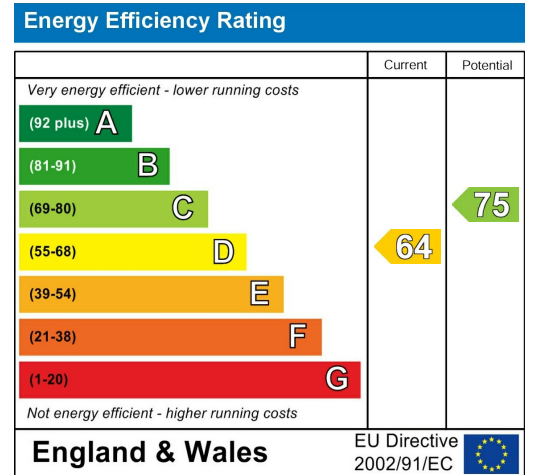
Please contact our Davidson Frost-Wellings Office on 020 8954 8806 if you wish to arrange a viewing appointment for this property or require further information.



# Floor Plan



# Area Map



These particulars, whilst believed to be accurate are set out as a general outline only for guidance and do not constitute any part of an offer or contract. Intending purchasers should not rely on them as statements of representation of fact, but must satisfy themselves by inspection or otherwise as to their accuracy. No person in this firm's employment has the authority to make or give any representation or warranty in respect of the property.